

## Purpose

- To enhance the organizational capacity of local primary health care organizations to participate in Hispanic health research.
- To develop and implement practical academic-community partnered research strategies to address health disparities, while better serving the cancer screening needs of Latinos

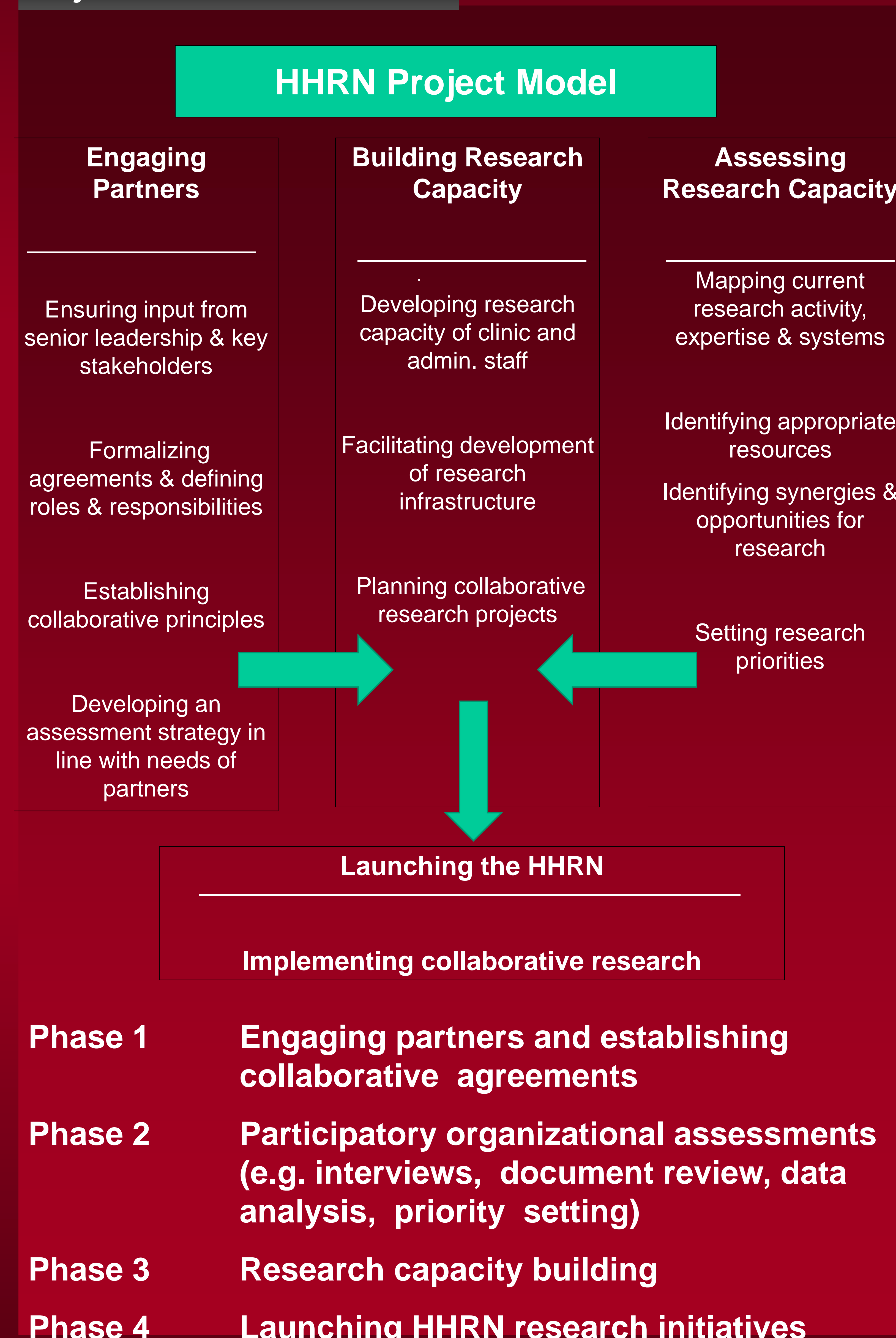
## Background

- The healthcare infrastructure in South Carolina was unprepared for the emergence of a growing Hispanic population composed primarily of limited-English-proficient immigrants, which has occurred over the past 15 years.
- The lack of population, health status, and healthcare utilization data for the Hispanic population in SC is a significant impediment to the development of research and implementation of culturally and linguistically appropriate interventions.
- The South Carolina Hispanic/Latino Health Coalition and the University of South Carolina created and sustained collaborative community-academic partnerships to address Hispanic health issues over the past 8 years.

## Practice-Based Partners

- **The Eau Claire Cooperative Health Centers, Inc. (ECCHC)**  
A federally qualified health center network and the largest provider of primary healthcare services to Hispanics in South Carolina
- **The Palmetto Health Women's Center**  
Operated in conjunction with Palmetto Health Systems and the USC School of Medicine as a training site for OB/GYN residents, The Women's Center serves medically underserved women
- **The Community Medical Clinic of Kershaw County**  
An established 501(c)3 Free Medical Clinic providing primary and preventive care for uninsured residents of Kershaw county with limited incomes

## Project Model and Methods



## Preliminary Findings

The initial participatory assessment indicates awareness and interest in:

- Improving service delivery for Hispanic clients
- Analyzing existing data on Hispanic clients
- Examining utilization and effectiveness of language interpretation services
- Determining health literacy levels and providing culturally and linguistically appropriate health education materials
- Sharing research and practice policies and guidelines (e.g. Spanish-language documents)
- Enhancing exchange of information and experiences among practice-based partners

## Next Steps

- Setting research priorities and exploring areas of synergy and collaboration
- Developing the research capacity of partner staff through participatory workshops and improvements in data collection and analysis practices

## Affiliations

1. University of South Carolina
2. South Carolina Hispanic/Latino Health Coalition
3. Eau Claire Cooperative Health Centers
4. Community Medical Clinic of Kershaw County
5. Palmetto Health Women's Center
6. University of Texas Health Sciences Center, San Antonio